



# Olney and Stony Stratford Incidents 01 May 2016





Bull Hotel, 9 Market Place, Olney

T.O.C. 13:10:37

<u>Callsign</u>	<u>Alerted</u>	<u>Mobile</u>	<u>On Scene</u>
JC14P1	13:12:30	13:15:57	13:24:11
JC13P1	13:12:30	13:13:43	13:23:13
JC11P1	13:12:30	13:13:32	13:27:58

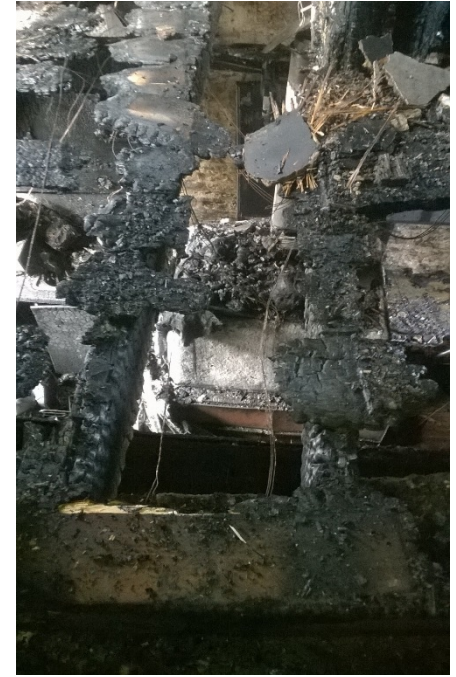




Timeline:

- 13:23 Inf Building well alight
- 13:31 Priority Make pumps 4, make Turntable Ladders 1
- 13:53 Priority Make pumps 6, Incident now sectorised, sector 1 and 3 in operation
- 14:14 Inf 6BA in use, 1 TTL in use, PPV, 3 HR's, 1 Main Jet
- 15:11 **TVFCS** Call received – fire at 73 High Street, Stony Stratford
- 15:51 Stop Building consisting of 3 floors, 20m x 10m, used as a hotel and public house, 6BA, 3 HR, 1 Main Jet, PPV, TTL and 10.5m ladder in use
- 16:15 **TVFCS** 21C7 will be required to attend incident in Stony Stratford





- Crews remained on scene until late evening
- Re-inspections every 2hrs throughout the night
- Cause – Fire in pizza oven



# RMT, TVFCS Actions

- Resilience GC stood up.
- 2 x SC Recall.
- On Call SMS; Ble On Call stood up.
- Winslow, Aylesbury, Beds pump to MK area during Olney inc.
- Waddesdon, Ble On Call to MK area during Stony inc.

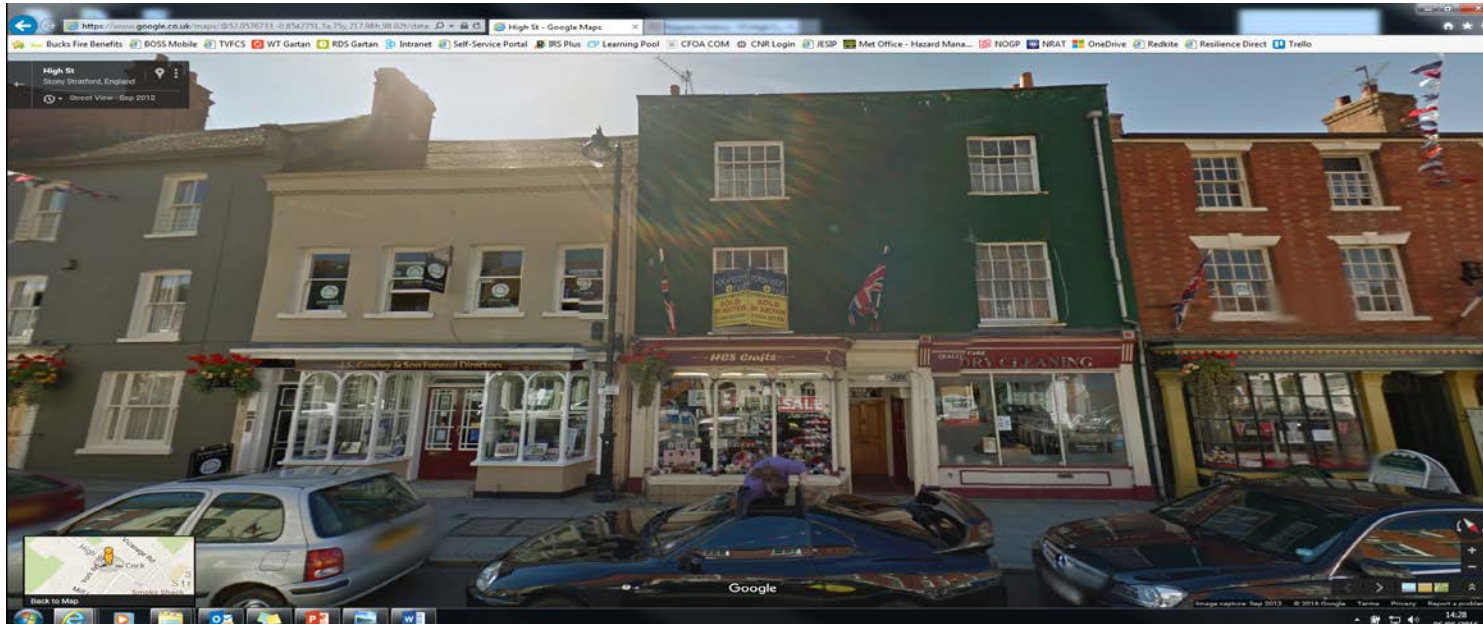


73 High Street, Stony Stratford

T.O.C. 15:11:06

<u>Callsign</u>	<u>Alerted</u>	<u>Mobile</u>	<u>On Scene</u>
22P1	15:12:51	15:14:00	15:23:42
23P1	15:12:51	15:14:17	15:27:22
21P1	15:19:55	15:20:56	15:32:56

(3rd appliance – Beds)





Timeline:

- 15:24 Inf Building well alight, crews fully committed
- 15:29 Priority Make pumps 4, Turntable Ladders 1
- 15:34 Priority Make pumps 6
- 15:58 Inf 3 Storey building, approx. 10m x 30m, 1st and 2nd floor well alight, fire has spread to roof, 4 BA, 4 HR's 13:53
- 16:35 Inf 3 Storey building, residential and commercial, no's 71, 73, 75 and 77, approx. 10m x 30m, 1<sup>st</sup> 2<sup>nd</sup> and roof well alight, 1 BA, 1 TTL, 3 main jets
- 18:00 Partial collapse of roof





## 18:00 Partial collapse of roof/front face of building



- Crews remained on scene throughout the night
- Incident was handed over to MK Council and Highways – Monday midday
- Cause – F.I. still ongoing – electrical, pitched roof above bathroom